

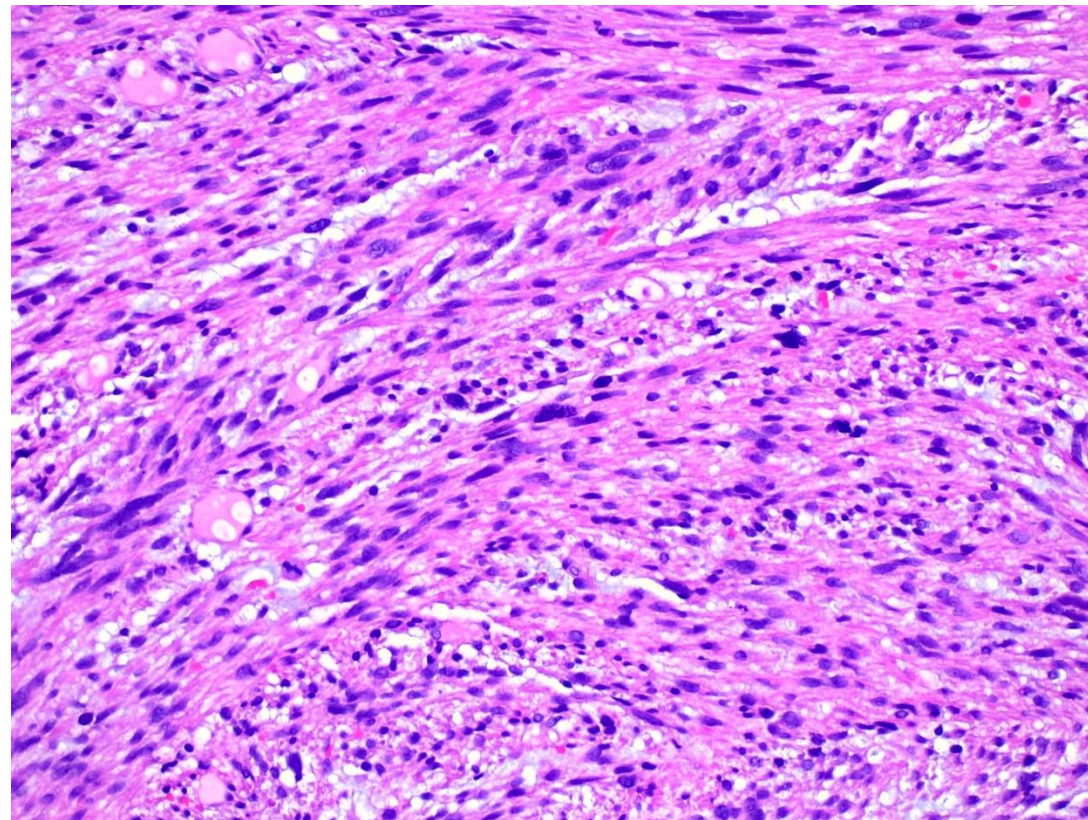
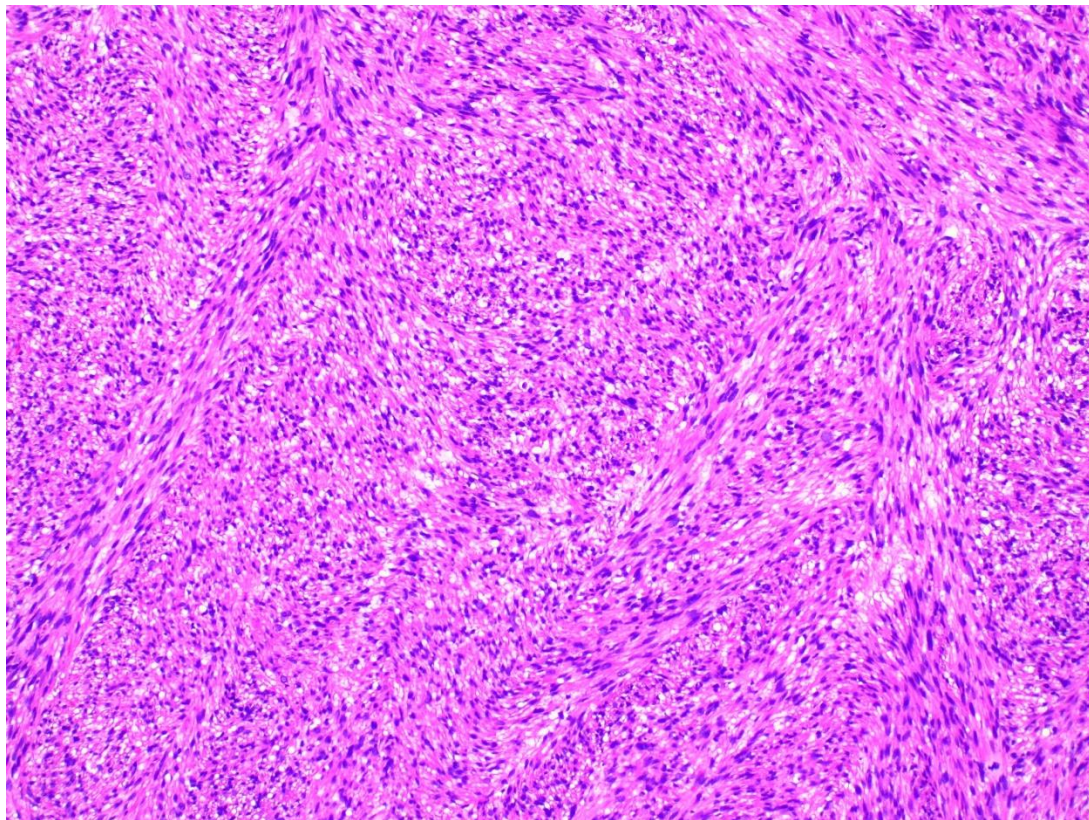
Quiz 4

Ritu Bhalla, MD

2019-20

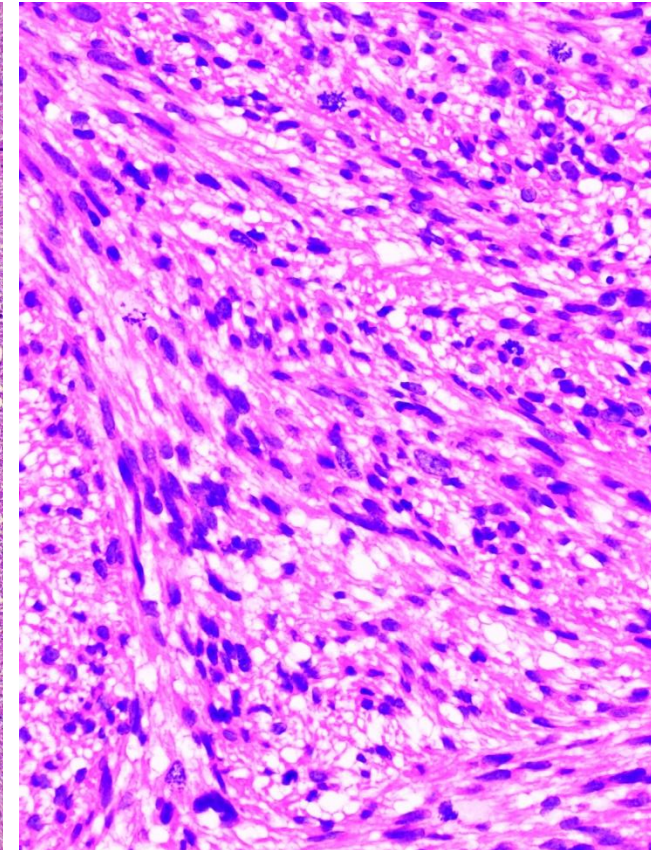
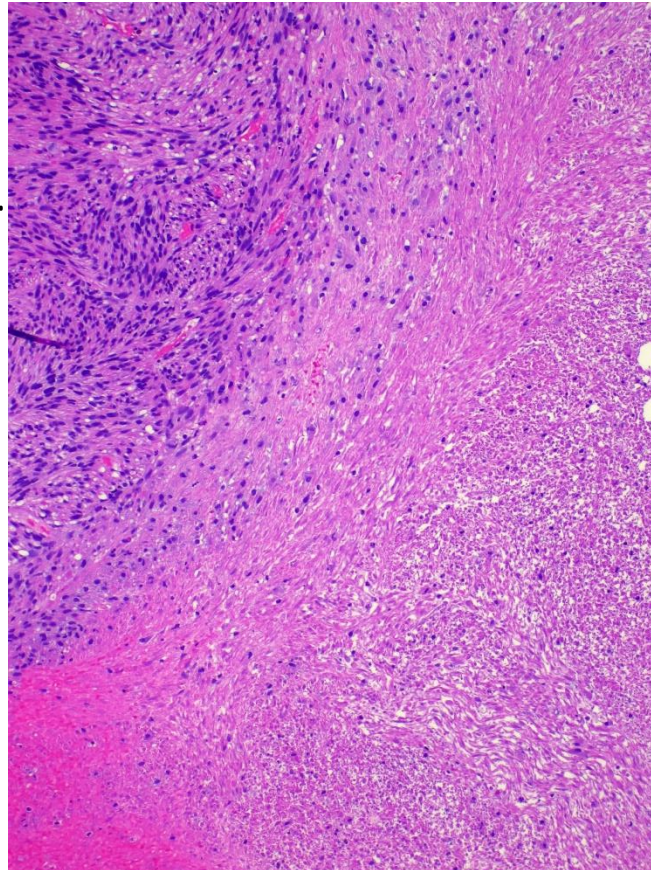
Questions 1-3

- 63 year old female with a prior history of cervical cancer, treated by radiation, now presents with hematuria. Cystoscopy revealed a mass. TURB from the mass, as shown



Question 1

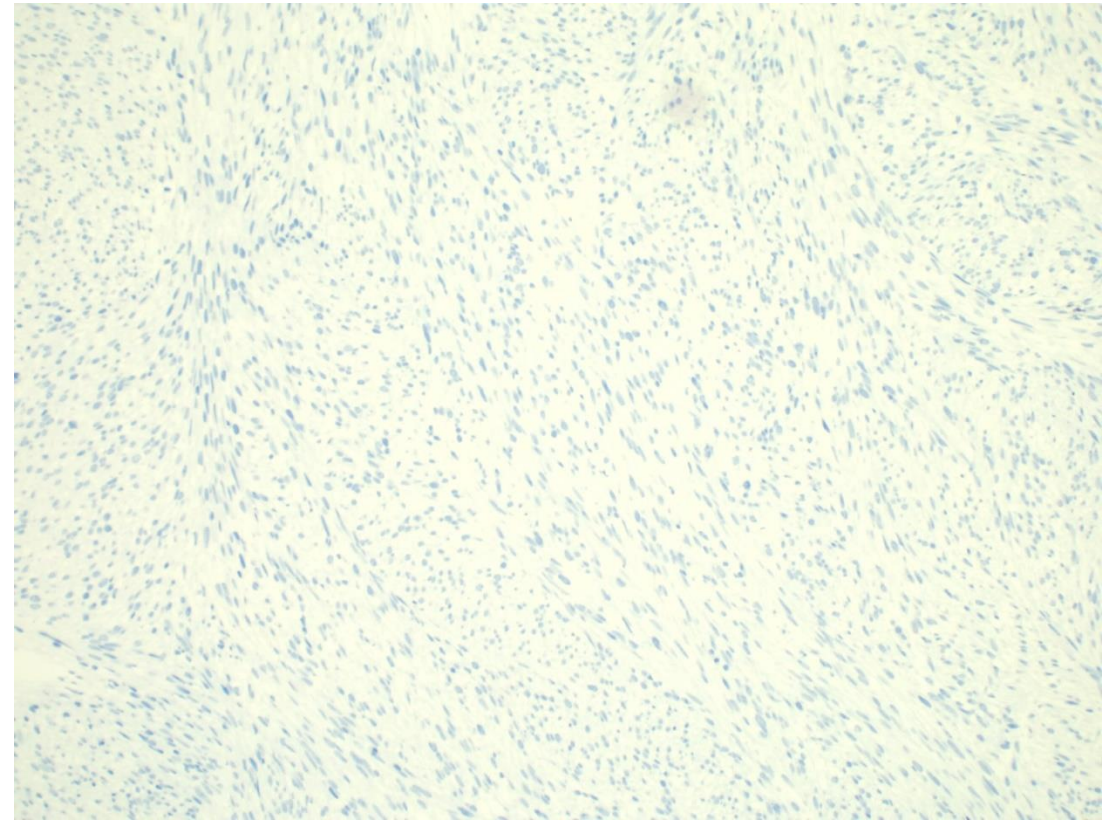
- Which combination of stains would be most helpful for diagnosis
1. Pan cytokeratin, Desmin, ALK1
 2. Pan cytokeratin, Synaptophysin, CD44
 3. Desmin, Myogenin, CD44
 4. Pan cytokeratin, GATA3, EMA
 5. Toluidine blue, Giemsa



Question 2

ALK1

- What statement is associated with this lesion?
 1. History of trauma/prior instrumentation
 2. Germline mutation in SDH gene
 3. T(2;13) translocation
 4. High recurrence and metastatic rate

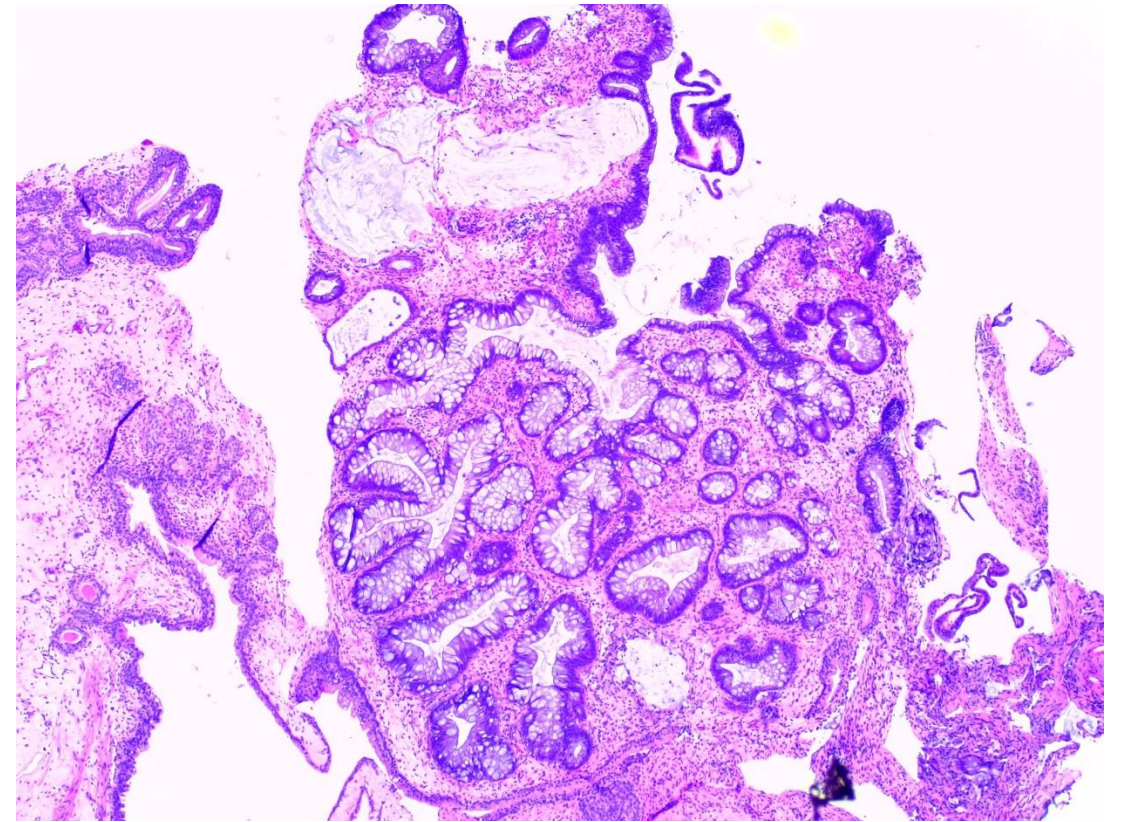
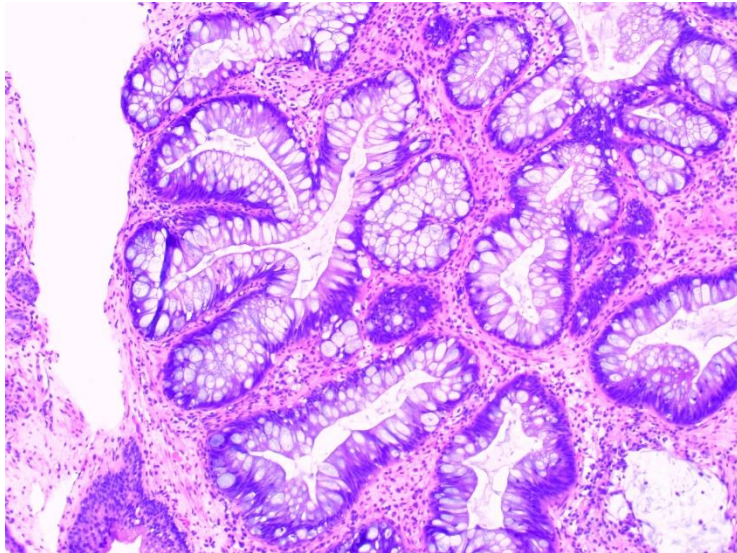


Question 3

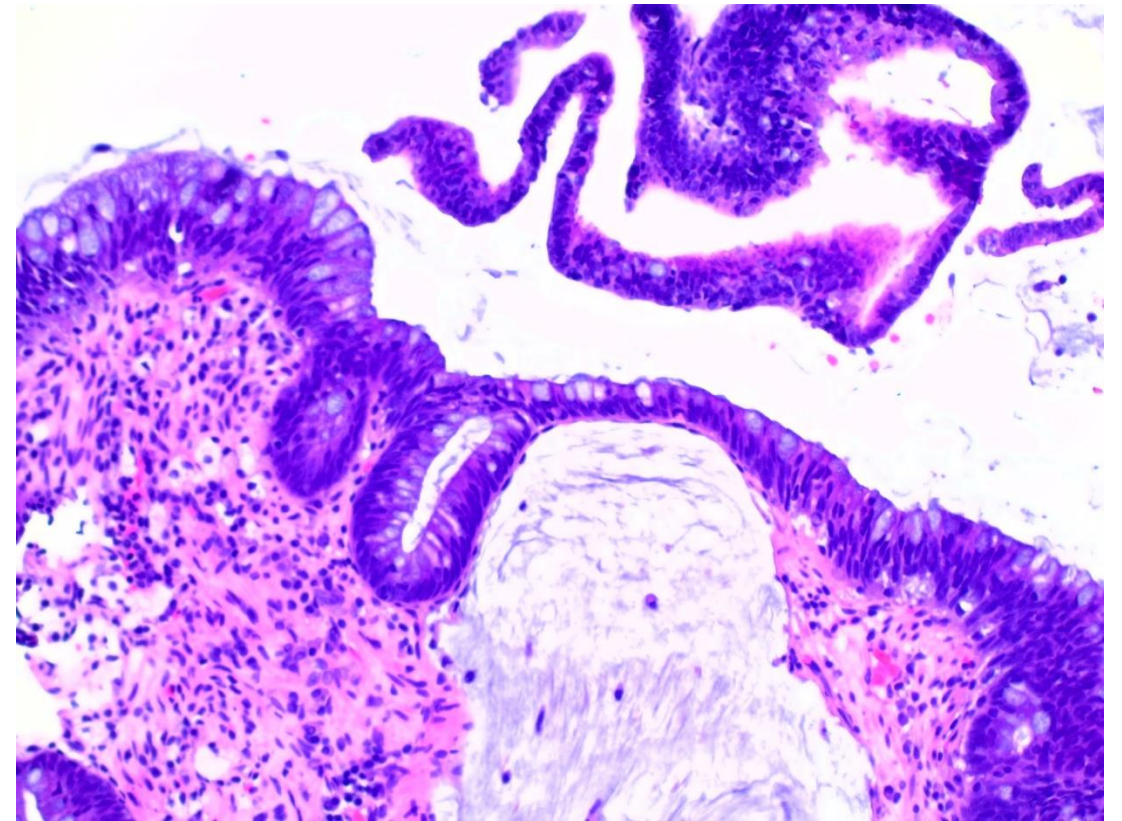
- What is the most likely diagnosis
 1. Inflammatory myofibroblastic tumor
 2. Leiomyosarcoma
 3. Rhabdomyosarcoma
 4. Paraganglioma

Question 4

- 57 year old male with hydronephrosis due to ureteral obstruction. Cystoscopy reveals nodular protrusion at the ureteral opening in the bladder

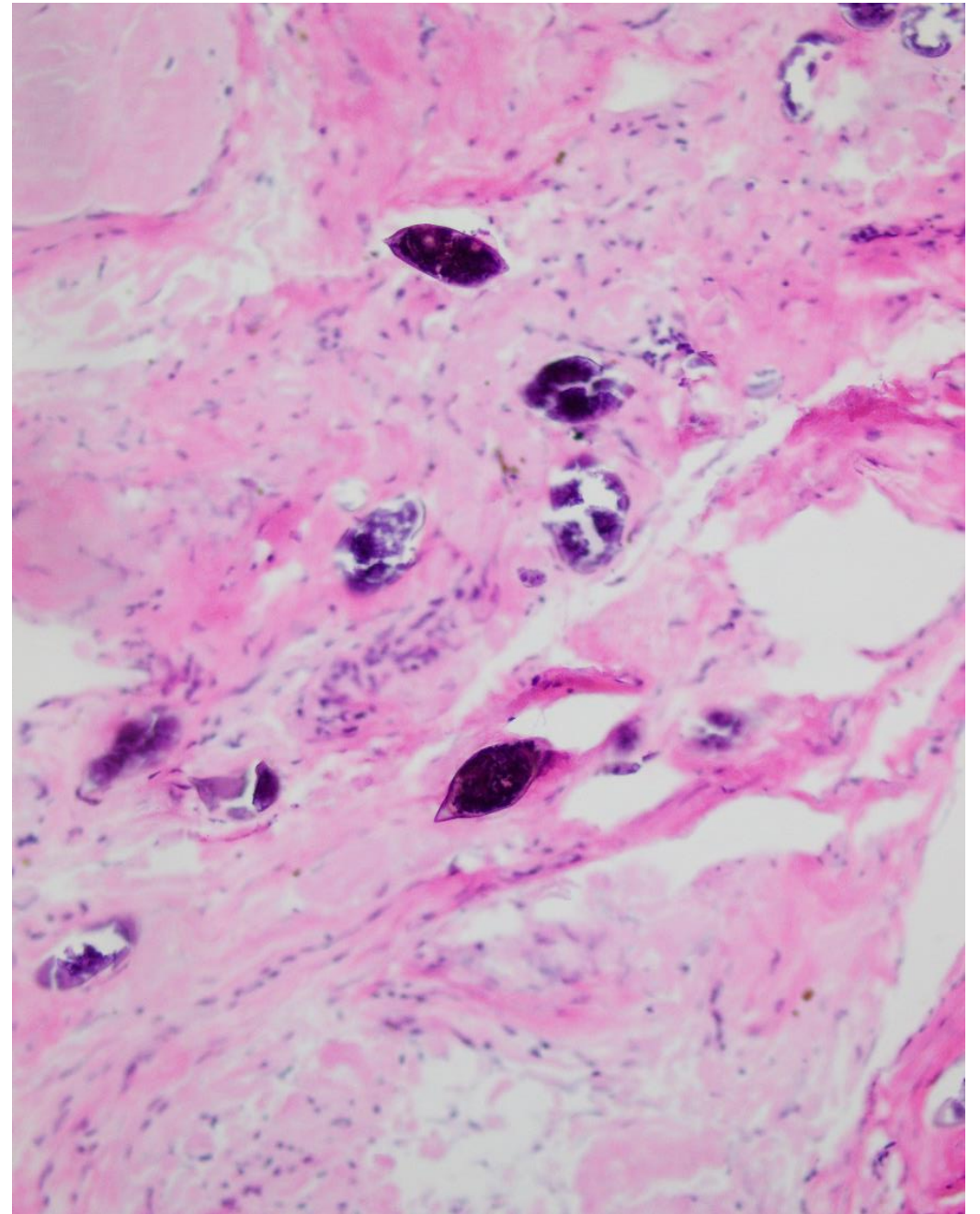


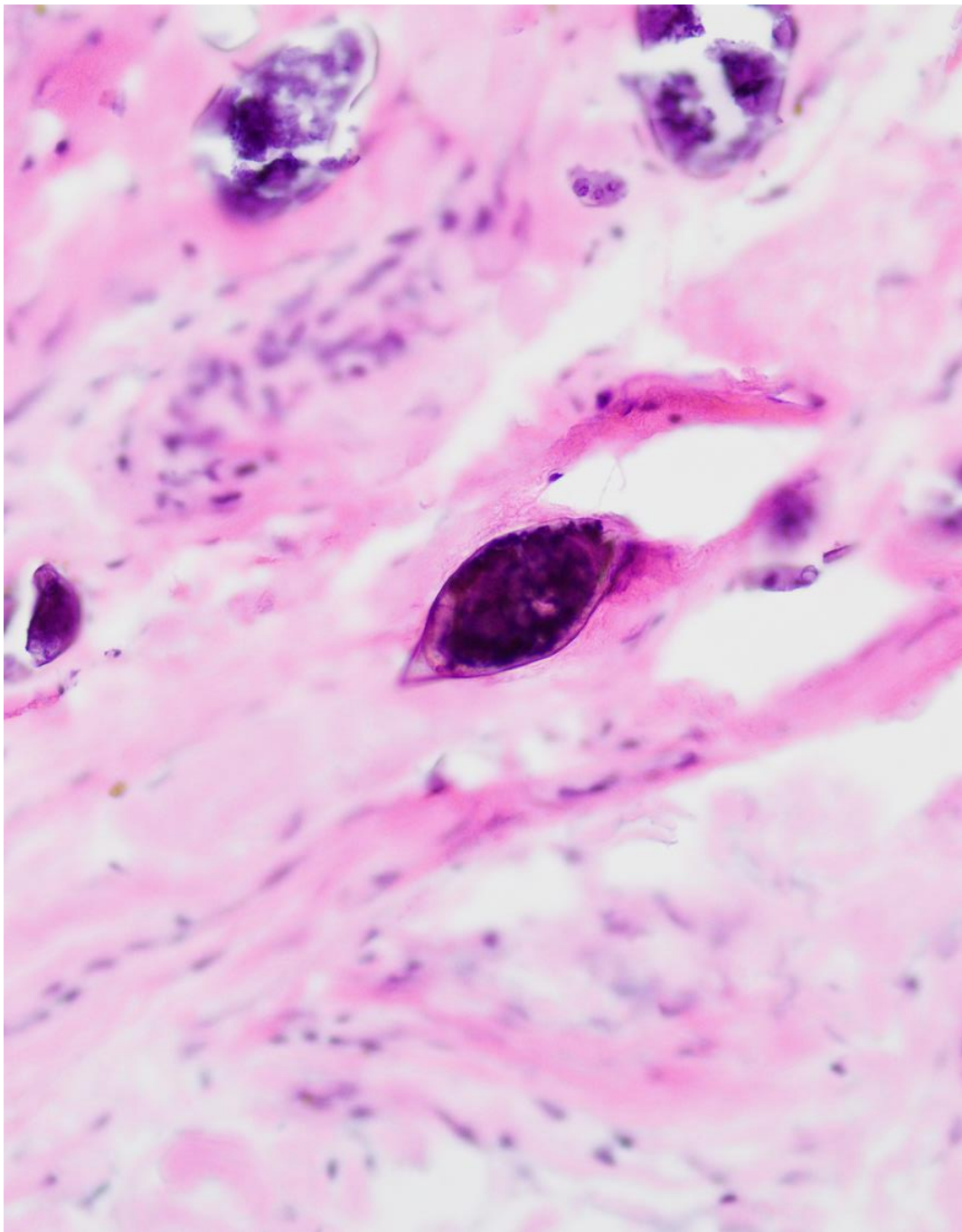
- What is your diagnosis
 1. Adenocarcinoma
 2. Prostatic type polyp
 3. Cystitis glandularis with intestinal metaplasia and focal adenomatous change
 4. Bladder hamartoma



Questions 5-9

- Images are from a 53 year old Sudanese female presenting with hematuria. Cystoscopy was performed, followed by bladder biopsy.





Question 5

- Although a biopsy was conducted but non-invasive method/methods to diagnose this condition would be
 1. ELISA test in serum
 2. Urine microscopy
 3. CT scan
 4. All of the above

Question 6

- Which of the following may be associated with this condition
 1. Squamous metaplasia
 2. Michaelis-Guttman bodies
 3. Expression of PSA and AMACR by the lesional cells
 4. Seen almost exclusively in middle aged and older females

Question 7

- The treatment of choice of the condition shown in the pictures is
 1. Intravesical bCG
 2. Transurethral resection
 3. Antiparasitic drugs
 4. Radiation therapy

Question 8

- Which morbidity/morbidities are associated with this condition
 1. Adenocarcinoma
 2. Squamous cell carcinoma
 3. Hydronephrosis
 4. Pyelonephritis
 5. All of the above

The end